

5 DAYS RAINFALL FORECAST FOR THE DISTRICTS OF GUJARAT REGION, DAMAN AND DADRA NAGAR HAVELI

DATE OF ISSUE : 16-05-2021

S.NO.	DISTRICT	16 MAY	17 MAY	18 MAY	19 MAY	20 MAY
		DAY-1 (Today)	DAY-2 (Mon)	DAY-3 (Tue)	DAY-4 (Wed)	DAY-5 (Thu)
1	BANASKANTHA	Dry Very Likely	Light to Moderate RA/TSH(at many places) Very Likely	Heavy At Isolated Places Very Likely	Heavy At Isolated Places Very Likely	Light to Moderate RA/TSH(at isolated places) Very Likely
2	PATAN	Dry Very Likely	Light to Moderate RA/TSH(at many places) Very Likely	Heavy At Isolated Places Very Likely	Light to Moderate RA/TSH(a few places) Very Likely	Dry Very Likely
3	MEHSANA	Dry Very Likely	Light to Moderate RA/TSH(at many places) Very Likely	Heavy At Isolated Places Very Likely	Heavy At Isolated Places Very Likely	Dry Very Likely
4	SABARKANTHA	Light to Moderate RA/TSH(at isolated places) Very Likely	Light to Moderate RA/TSH(at many places) Very Likely	Heavy At Isolated Places Very Likely	Heavy At Isolated Places Very Likely	Light to Moderate RA/TSH(at isolated places) Very Likely
5	GANDHINAGAR	Dry Very Likely	Light to Moderate RA/TSH(at many places) Very Likely	Heavy to Very Heavy At a few Places Very Likely	Light to Moderate RA/TSH(a few places) Very Likely	Dry Very Likely
6	ARAVALLI	Dry Very Likely	Light to Moderate RA/TSH(at many places) Very Likely	Heavy At Isolated Places Very Likely	Light to Moderate RA/TSH(a few places) Very Likely	Dry Very Likely
7	KHEDA	Dry Very Likely	Heavy to Very Heavy At Isolated Places Very Likely	Heavy At Isolated Places Very Likely	Dry Very Likely	Dry Very Likely
8	AHMEDABAD	Light to Moderate RA/TSH(at isolated places) Very Likely	Heavy to Very Heavy At Isolated Places Very Likely	Heavy to Very Heavy At a few Places Very Likely	Light to Moderate RA/TSH(a few places) Very Likely	Dry Very Likely
9	ANAND	Dry Very Likely	Heavy to Very Heavy At Isolated Places Very Likely	Heavy to Very Heavy At a few Places Very Likely	Dry Very Likely	Light to Moderate RA/TSH(at isolated places) Very Likely
10	BARODA	Light to Moderate RA/TSH(a few places) Very Likely	Heavy At Isolated Places Very Likely	Heavy At Isolated Places Very Likely	Dry Very Likely	Dry Very Likely
11	PANCHMAHAL	Dry Very Likely	Light to Moderate RA/TSH(at many places) Very Likely	Light to Moderate RA/TSH(at most places) Very Likely	Dry Very Likely	Dry Very Likely
12	DOHAD	Dry Very Likely	Light to Moderate RA/TSH(at many places) Very Likely	Light to Moderate RA/TSH(at most places) Very Likely	Dry Very Likely	Light to Moderate RA/TSH(at isolated places) Very Likely
13	MAHISAGAR	Dry Very Likely	Light to Moderate RA/TSH(at many places) Very Likely	Heavy At Isolated Places Very Likely	Dry Very Likely	Dry Very Likely
14	CHHOTA UDAIPUR	Dry Very Likely	Light to Moderate RA/TSH(at many places) Very Likely	Light to Moderate RA/TSH(at most places) Very Likely	Dry Very Likely	Light to Moderate RA/TSH(at isolated places) Very Likely

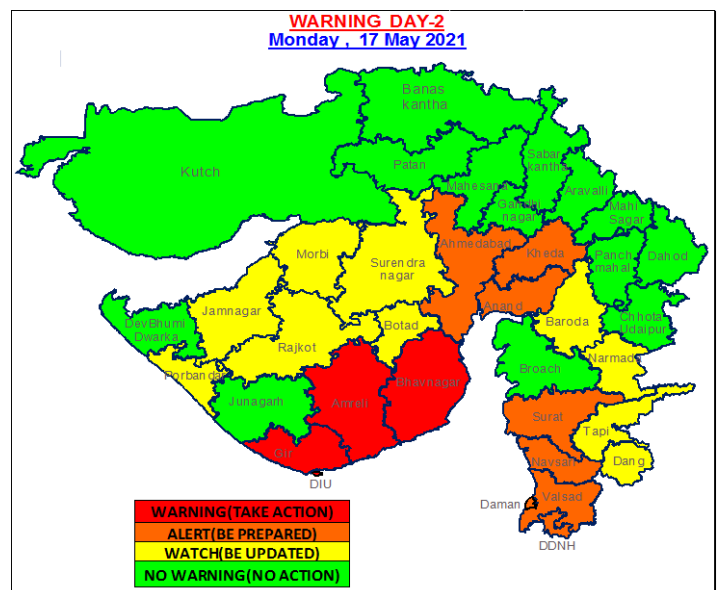
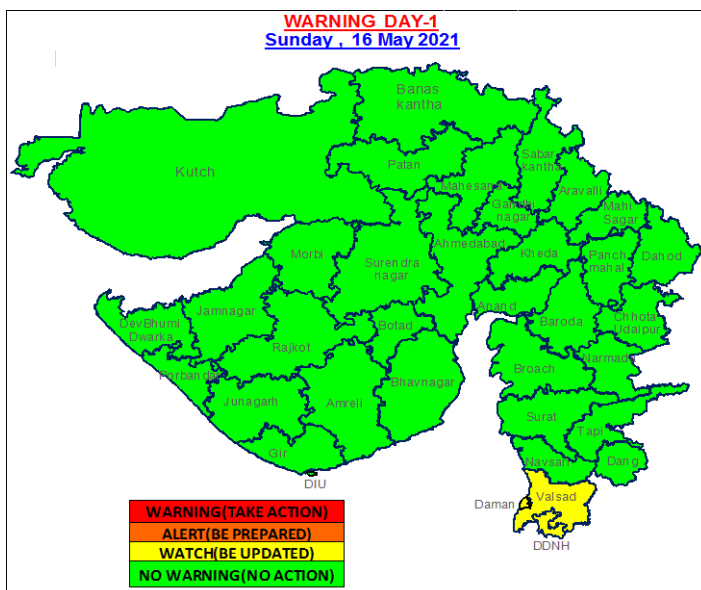
15	NARMADA	Dry Very Likely	Heavy At Isolated Places Very Likely	Light to Moderate RA/TSH(at most places) Very Likely	Dry Very Likely	Light to Moderate RA/TSH(a few places) Very Likely
16	BROACH	Light to Moderate RA/TSH(a few places) Very Likely	Light to Moderate RA/TSH(at many places) Very Likely	Heavy At Isolated Places Very Likely	Light to Moderate RA/TSH(at isolated places) Very Likely	Dry Very Likely
17	SURAT	Light to Moderate RA/TSH(a few places) Very Likely	Heavy to Very Heavy At Isolated Places Very Likely	Heavy At Isolated Places Very Likely	Light to Moderate RA/TSH(at isolated places) Very Likely	Dry Very Likely
18	DANGS	Light to Moderate RA/TSH(a few places) Very Likely	Heavy At Isolated Places Very Likely	Light to Moderate RA/TSH(at most places) Very Likely	Dry Very Likely	Dry Very Likely
19	NAVSARI	Light to Moderate RA/TSH(a few places) Very Likely	Heavy to Very Heavy At Isolated Places Very Likely	Light to Moderate RA/TSH(at most places) Very Likely	Light to Moderate RA/TSH(at isolated places) Very Likely	Dry Very Likely
20	VALSAD	Heavy At Isolated Places Very Likely	Heavy to Very Heavy At Isolated Places Very Likely	Light to Moderate RA/TSH(at most places) Very Likely	Light to Moderate RA/TSH(at isolated places) Very Likely	Dry Very Likely
21	TAPI	Dry Very Likely	Heavy At Isolated Places Very Likely	Light to Moderate RA/TSH(at most places) Very Likely	Dry Very Likely	Dry Very Likely
U.T	DADARA NAGAR HAVELI	Heavy At Isolated Places Very Likely	Heavy to Very Heavy At Isolated Places Very Likely	Light to Moderate RA/TSH(at most places) Very Likely	Light to Moderate RA/TSH(at isolated places) Very Likely	Dry Very Likely
U.T	DAMAN	Heavy At Isolated Places Very Likely	Heavy to Very Heavy At Isolated Places Very Likely	Light to Moderate RA/TSH(at most places) Very Likely	Light to Moderate RA/TSH(at isolated places) Very Likely	Dry Very Likely

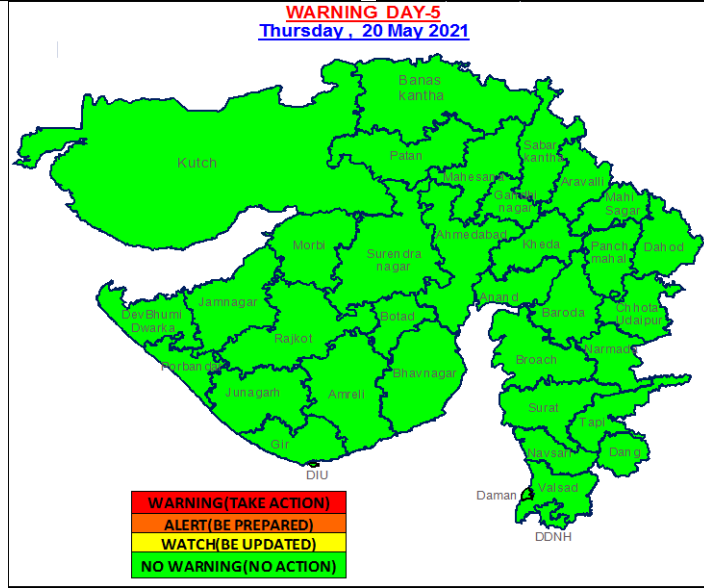
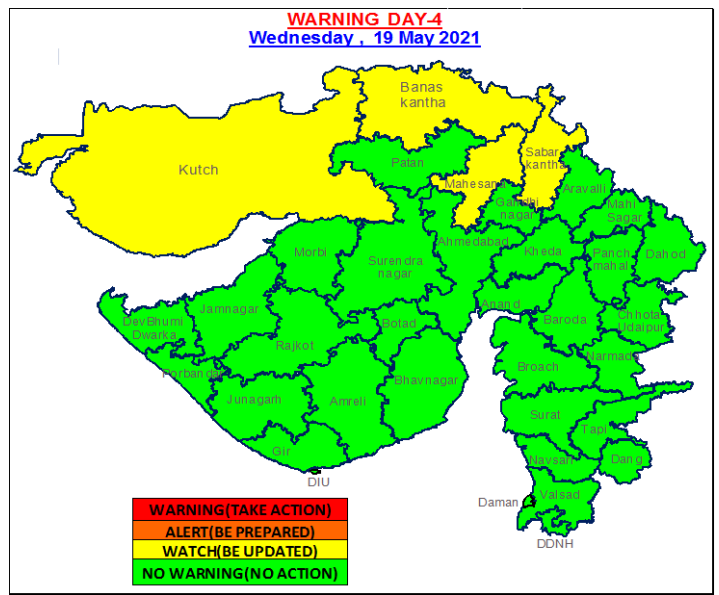
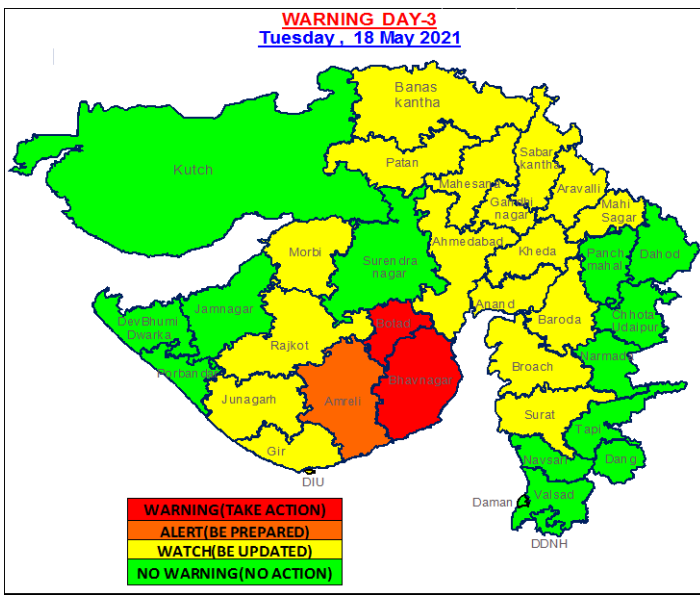
5 DAYS RAINFALL FORECAST FOR THE DISTRICTS OF SAURASHTRA, KUTCH AND DIU

22	SURENDRANAGAR	Dry Very Likely	Heavy to Very Heavy At a few Places Very Likely	Light to Moderate RA/TSH(at most places) Very Likely	Light to Moderate RA/TSH(at isolated places) Very Likely	Dry Very Likely
23	RAJKOT	Light to Moderate RA/TSH(a few places) Very Likely	Heavy to Very Heavy At a few Places Very Likely	Heavy to Very Heavy At a few Places Very Likely	Dry Very Likely	Dry Very Likely
24	JAMNAGAR	Dry Very Likely	Heavy At Isolated Places Very Likely	Light to Moderate RA/TSH(at most places) Very Likely	Dry Very Likely	Dry Very Likely
25	PORBANDAR	Dry Very Likely	Heavy At Isolated Places Very Likely	Light to Moderate RA/TSH(at most places) Very Likely	Dry Very Likely	Dry Very Likely
26	JUNAGADH	Dry Very Likely	Light to Moderate RA/TSH(at most places) Very Likely	Heavy At Isolated Places Very Likely	Dry Very Likely	Light to Moderate RA/TSH(at isolated places) Very Likely
27	AMRELI	Light to Moderate RA/TSH(a few places)	Heavy to Very Heavy At Isolated Places With isolated	Heavy to Very Heavy At Isolated Places With isolated	Dry Very Likely	Light to Moderate RA/TSH(at isolated places)

		Very Likely	extremely heavy falls Very Likely	extremely heavy falls Very Likely		Very Likely
28	BHAVNAGAR	Light to Moderate RA/TSH(a few places) Very Likely	Extremely Heavy At Isolated Places Very Likely	Heavy to Very Heavy At Isolated Places With isolated extremely heavy falls Very Likely	Dry Very Likely	Dry Very Likely
29	MORBI	Dry Very Likely	Heavy At Isolated Places Very Likely	Heavy At Isolated Places Very Likely	Light to Moderate RA/TSH(at most places) Very Likely	Dry Very Likely
30	DEVBHUMI DWARKA	Dry Very Likely	Light to Moderate RA/TSH(at most places) Very Likely	Light to Moderate RA/TSH(at most places) Very Likely	Dry Very Likely	Dry Very Likely
31	GIR SOMNATH	Light to Moderate RA/TSH(a few places) Very Likely	Extremely Heavy At Isolated Places Very Likely	Heavy to Very Heavy At a few Places Very Likely	Dry Very Likely	Dry Very Likely
32	BOTAD	Dry Very Likely	Heavy to Very Heavy At a few Places Very Likely	Heavy to Very Heavy At Isolated Places With isolated extremely heavy falls Very Likely	Dry Very Likely	Dry Very Likely
33	KUTCH	Light to Moderate RA/TSH(at isolated places) Very Likely	Light to Moderate RA/TSH(at most places) Very Likely	Light to Moderate RA/TSH(at most places) Very Likely	Heavy At Isolated Places Very Likely	Light to Moderate RA/TSH(at isolated places) Very Likely
U.T	DIU	Light to Moderate RA/TSH(a few places) Very Likely	Extremely Heavy At Isolated Places Very Likely	Heavy to Very Heavy At a few Places Very Likely	Light to Moderate RA/TSH(at isolated places) Very Likely	Dry Very Likely

(WARNING)





Legends:-

INTENSITY OF RAINFALL		हिन्दी / गुजराती
VERY LIGHT	0.1 TO 2.4 MM	बहुत हल्की वर्षा / બહુજ ઓછુ વરસાદ
LIGHT	2.5 - 15.5 MM	हल्की वर्षा / ઓછો વરસાદ
MODERATE	15.6 - 64.4 MM	मध्यम वर्षा / મધ્યમ વરસાદ
HEAVY	64.5 - 115.5 MM	भारी वर्षा / ભારે વરસાદ
VERY HEAVY	115.6 - 204.4 MM	बहुत भारी वर्षा / ખૂબ ભારે વરસાદ
EXTREMELY HEAVY	≥ 204.5 MM	अत्यधिक भारी वर्षा / અત્યંત ભારે વરસાદ
EXCEPTIONALLY HEAVY	WHEN THE AMOUNT IS A VALUE NEAR ABOUT THE HIGHEST RECORDED RAINFALL AT OR NEAR THE STATION FOR THE MONTH OR SEASON. HOWEVER, THIS TERM WILL BE USED ONLY WHEN THE ACTUAL RAINFALL AMOUNT EXCEEDS 12 CM	असाधारण भारी वर्षा / અસામાન્ય ભારે વરસાદ

PROBABILITY OF OCCURENCE (%)	हिन्दी	ગુજરાતી
UNLIKELY	संभावना नहीं	શક્યતા નથી.
LIKELY	संभावित	શક્યતા છે.
VERY LIKELY	अधिक संभावना	વધારે શક્યતા છે.

MOST LIKELY	अत्याधिक संभावना	अत्याधिक शक्यता છે.
-------------	------------------	---------------------

WARNING COLOUR CODES	हिन्दी	ગુજરાતી
WARNING (TAKE ACTION)	चेतावनी	ચેતાવણી
ALERT (BE PREPARED)	सतर्क रहें	સતર્ક રહો
WATCH (BE UPDATED)	निगरानी रखें	ધ્યાન આપો
NO WARNING (NO ACTION)	कोई चेतावनी नहीं	કોઈ ચેતાવણી નથી